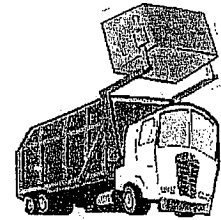




TRASH TALK from Allied Waste SERVICES

Answers to Questions About Your Residential Trash Collection Village of Holly



WELCOME

Let us take this moment to thank you for your business! In order to serve you better, we have prepared a list of guidelines for your disposal needs. Please take a moment to review our procedures. By doing so you will know what to expect from our staff each week as we service your home.

CUSTOMER SERVICE

Customer Service Reps are available to assist you Monday through Friday 8:00 am - 5:00 pm. Call us toll free:

☎ 800-858-0089

We also can be reached via email at:
alliedwasteeastmichigan@awin.com

YOUR SERVICE INCLUDES

Unlimited household trash, yard waste and recycle. Please do not put trash in cardboard boxes or loose trash in trash containers. Limit all containers and bags to no more than 40 lbs.

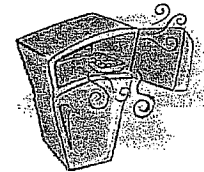


PICK UP SCHEDULE

Please have your trash at curbside no later than 6:00 am. We are closed on the following holidays: New Years Day, Memorial Day, Fourth of July, Labor Day, Thanksgiving Day and Christmas Day. Since we are closed on these holidays, collection is rescheduled one day later than regular service for each day in the week following the holiday.

SPECIAL PICK UPS

Large items are handled through Customer Service. Please call us at least 1 day prior to your pickup day to arrange removal of appliances, bulky items, construction debris, furniture, and carpet.



MISSED PICKUPS

If you feel your stop was missed, please contact Customer Service. If it was an error on our part, we would be happy to send a truck back to your home.

HEAVY SNOW

Trucks will be sent out on schedule except in extreme conditions. Place trash on TOP of snow. Bags and cans must be accessible from the road. If trash is frozen to the ground the driver cannot take it. Some services may be temporarily suspended due to weather/road conditions.

RECYCLING PROCEDURES

Allied Waste Services appreciates your concern for the preservation of the environment. In response, we have developed a curbside recycling program to reduce the amount of materials that enter landfills. Recyclable products include:

- ✓ Cardboard - flattened no larger than 2'x2' cut and tied
- ✓ Magazines, catalogs, newspapers, paper bags, telephone books
- ✓ Plastic jugs and bottles marked with a #1 or #2 - must be crushed
- ✓ Glass bottles and jars - clear, brown, green and blue only
- ✓ Metal - cans, pie tins, metal lids, aluminum trays, metal clothes hangers and other small metal items are accepted



RESTRICTIONS

The following items are not allowed in our vehicles. Please be sure they are not included in your weekly trash.

- o Liquid paint, pesticides, gasoline, oil
- o Gas cans, disposable LP gas tanks
- o Cement, rocks, bricks
- o Syringes, infectious hospital waste
- o Liquid solvents & glue
- o Car batteries, automotive parts



YARD WASTE PROCEDURES



Michigan law requires that yard waste be disposed of at approved compost facilities rather than in landfills. Yard waste includes grass clippings, leaves, garden debris, small branches/shrubbery less than 4' in length and no larger than 2" in diameter (must be bundled and tied).

Yard waste will be accepted in brown paper lawn and garden bags or loose in trash cans up to 30 gallon clearly marked "Compost".

We do not accept the following:

- ⊗ Straw or hay
- ⊗ Apples
- ⊗ Logs, tree stumps
- ⊗ Dirt, rocks, sod
- ⊗ Compost in plastic bags



Compost Season begins the first week of April and runs through the end of November.

DUMPSTER RENTALS

Allied Waste Services has a wide variety of dumpster sizes for commercial, industrial or for your larger residential clean-ups or construction needs. Please call Customer Service for details.